

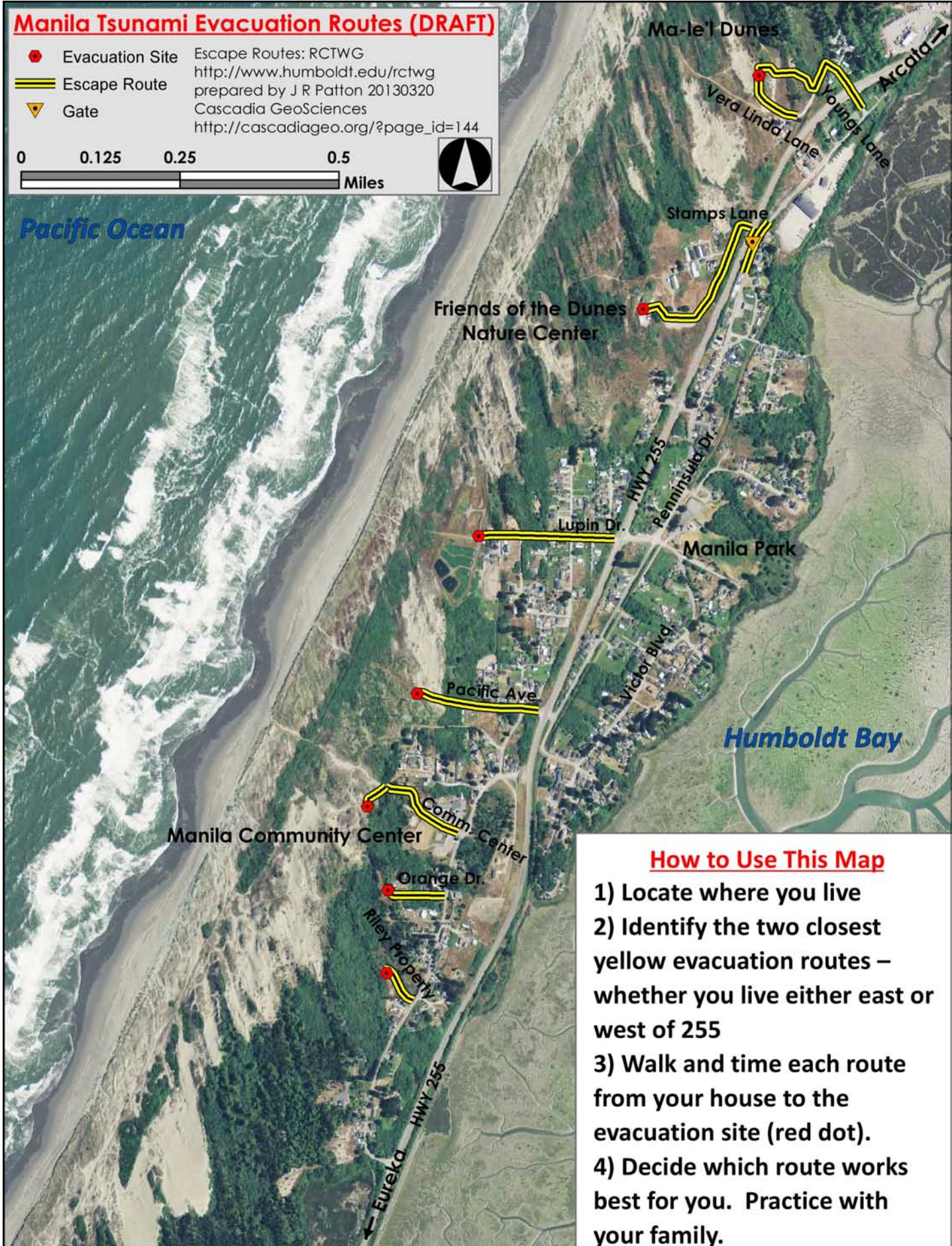

Manila Tsunami Evacuation Routes (DRAFT)

● Evacuation Site Escape Routes: RCTWG
<http://www.humboldt.edu/rctwg>
prepared by J R Patton 20130320
Cascadia GeoSciences
http://cascadiageo.org/?page_id=144

== Escape Route

▼ Gate

0 0.125 0.25 0.5
Miles



How to Use This Map

- 1) Locate where you live
- 2) Identify the two closest yellow evacuation routes – whether you live either east or west of 255
- 3) Walk and time each route from your house to the evacuation site (red dot).
- 4) Decide which route works best for you. Practice with your family.

Manila Prepares for Tsunamis

On April 13 at 10 AM, Manila is holding a Tsunami Evacuation Drill. The purpose of the drill is to test the seven proposed tsunami evacuation routes on the back of this flyer and make sure that every Manila resident knows the best way to get to high ground.

To get ready for the drill, Manila is hosting two Community Meetings at the Manila Community Center:

Tuesday, March 26th at 6:30 p.m.
Friday, April 12th at 5:30 p.m.

Please come to one or both!

At the meetings you will:

- Get an overview of Manila's tsunami risk;
- Identify the two best evacuation routes from your home, work place or favorite recreation area;
- Find out why driving to escape a local tsunami is a bad idea;
- Make sure that community preparedness addresses the mobility-impaired, the elderly, children left at home, and pets;
- Learn about the evacuation drill and how it will make you feel confident that you and your family will be safe during any tsunami;
- Hear inspirational stories of how community preparedness saved lives in Japan, Chile, Samoa, and Indonesia;
- Get advice on preparedness kits.



Be ready to drill on April 13, 10 AM! If you are unable to participate, please use the map on the back to practice your own evacuation.

Questions? Contact Linda Lee 707-442-1068 or Troy Nicolini 707-496-5959

This effort supported by the Manila Community Services District, the Arcata Fire Protection District, the Redwood Coast Tsunami Work Group, Friends of the Dunes, Eureka NWS Forecast Office, American Red Cross, Cascadia Geosciences, Humboldt County Sheriff's Dept. Office of Emergency Services, the Manila Teenship Wellness Village Resource Center, and your friends and neighbors in Manila

